

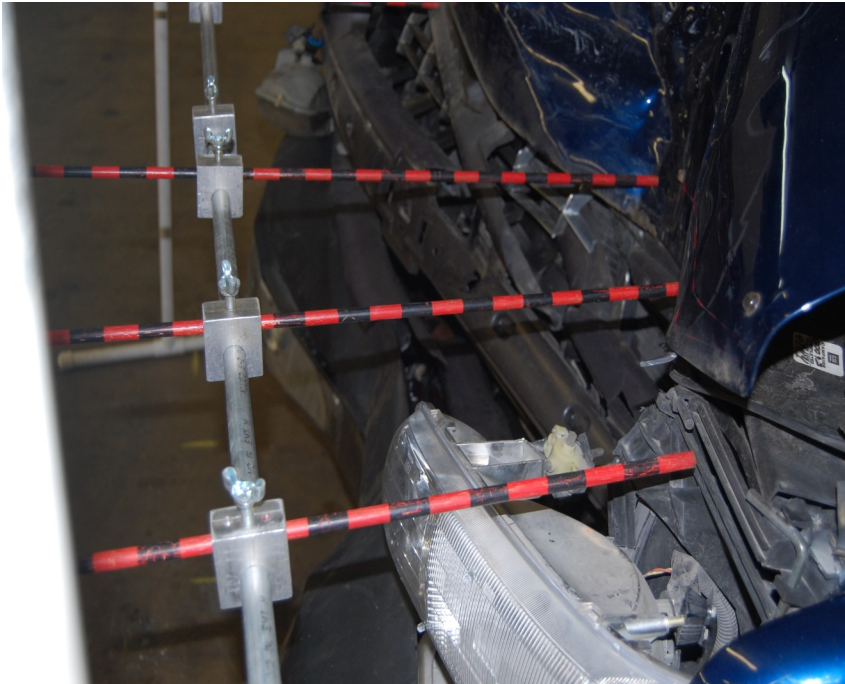
**Euless Police Department  
1102 West Euless Blvd  
Euless TX 76040**

**April 18 - 22, 2022**

## **CRUSH—Energy applications in Collision Investigation**

This course is for the experienced collision investigator who has previously completed Advanced Collision Investigation and/or Reconstruction classes.

Course studies include: **CRUSH Theory, Measurement Protocol, Closing Velocity, Crash Test Databases, Stiffness Coefficients, Barrier Equivalent Velocities, Delta V, Utilizing CDR Information** and additional topics.



Instructed by Tim Lovett  
and Crash Dynamics staff

**TUITION \$ 1050**

**CRUSH Jig \$700**

**COMBO SPECIAL:  
\$100 off Class +  
\$50 off CRUSH Jig**

Register with Peggy at 682/503-6529 OR [peggy.lovett@verizon.net](mailto:peggy.lovett@verizon.net)

**WWW.CRASHDYNAMICS.COM**